

Scrubber Tubes



Elemental Microanalysis Ltd manufactures a vast range of scrubber tubes. With such a variety of shapes, dimensions, and end fixings it can be a daunting task to correctly identify the tube required. Sub-divided by tube shape, then ordered by height (mm), we hope this guide helps you find what you are looking for.

Linear Shape



Asymmetrical Shape

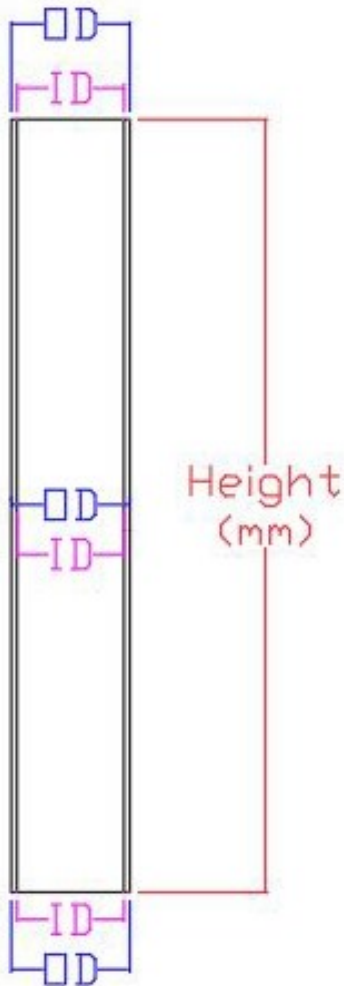


Classic Shape



U Tube Shape

Linear Shape



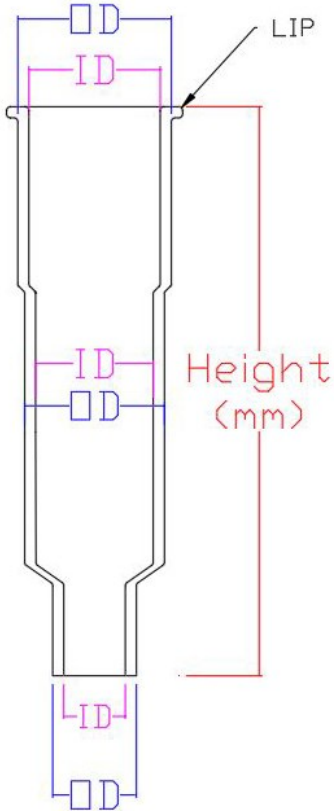
Please contact us for additional product specification. Data included is the information required to ensure compatibility with OEM e.g. Elementar® analyser or OEM part.

| Height (mm) | End Diameter Top (mm) OD | Centre Diameter (mm) OD | End Diameter Base (mm) OD | Part Number |
|-------------|-----------------------------|----------------------------|------------------------------|-----------------------|
| 38.0 | 13.6 | 12.0 | 13.6 | C3045 |
| 99.0 | 13.6 | 12.0 | 13.6 | C3008 |
| 101.5 | 16.0 | 16.0 | 16.0 | C4005 |
| 110.0 | 13.6 | 12.0 | 13.6 | C1008 |
| 120.0 | 20.0 | 20.0 | 20.0 | C8104 |
| 130.0 | 10.0 | 10.0 | 10.0 | C1021 |
| 134.0 | 16.0 | 16.0 | 16.0 | C4345 |
| 135.0 | 10.0 | 10.0 | 10.0 | C1015 |
| 150.0 | 24.7 | 22.0 | 24.7 | C3047 |
| 152.0 | 15.0 | 15.0 | 15.0 | C1068 |
| 160.0 | 20.0 | 20.0 | 20.0 | C6505 |
| 180.0 | 12.0 | 12.0 | 12.0 | C1154 |
| 203.0 | 11.0 | 11.0 | 11.0 | C2004 |
| 203.0 | 11.0 | 11.0 (constraint) | 11.0 | C6009 |
| 203.0 | 11.0 | 11.0 (dimples) | 11.0 | C2009 |
| 220.0 | 13.6 | 12.0 | 13.6 | C1142 |
| 220.0 | 20.0 | 20.0 | 20.0 | C8102 |
| 275.0 | 14.0 | 14.0 | 14.0 | C4341 |
| 280.0 | 20.0 | 20.0 | 20.0 | C6501 |
| 280.0 | 36.0 | 36.0 | 36.0 | C6500 |
| 300.0 | 13.6 | 12.0 | 13.6 | C1143 |
| 300.0 | 16.0 | 16.0 | 16.0 | C4803 |
| 348.0 | 24.7 | 22.0 | 24.7 | C3026 |

Scrubber Tubes



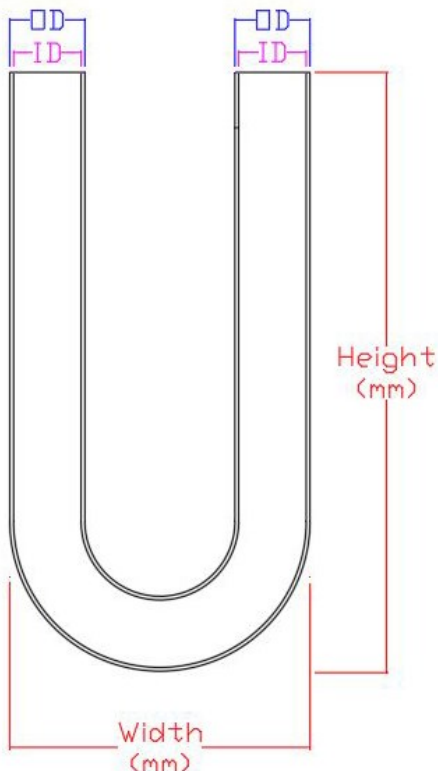
Asymmetrical Shape



| Height (mm) | Top End Detail | Centre Diameter (mm) | End Diameter Base (mm) | Part Number |
|-------------|----------------|----------------------|------------------------|-----------------------|
| | OD | OD | OD | |
| 102.0 | lip | 25.0 | | C1067 |
| 152.0 | lip | 25.0 | 16.0 | C4347 |
| 152.0 | lip | 26.0 | 16.0 | C4037 |
| 177.0 | lip | 36.0 | | C4805 |
| 178.0 | lip | 34.0 | 16.0 | C4043 |
| 290.0 | lip | 20.0 | 16.0 | C4342 |
| 290.0 | lip | 20.0 | | C4346 |
| 300.0 | lip | 26.0 | 16.0 | C4804 |
| 305.0 | lip | 34.0 | 16.0 | C4069 |

Please contact us for additional product specification. Data included is the information required to ensure compatibility with OEM e.g. Leco® analyser or OEM part.

U Tube Shape



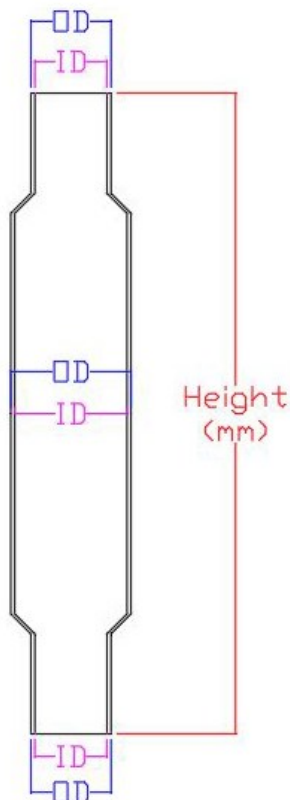
| Height (mm) | Width (mm) | Ends Diameter (mm) | Centre Diameter (mm) | Part Number |
|-------------|------------|--------------------|----------------------|-----------------------|
| | | OD | OD | |
| 92.0 | 94.0 | 11.0 | 11.0 | C2008 |
| 96.0 | 94.0 | 11.0 | 11.0 (constraint) | C6010 |
| 96.0 | 94.0 | 11.0 | 11.0 (dimples) | C2010 |
| 136.0 | 48.0 | 13.6 | 12.0 | C3123 |
| 178.0 | 60.0 | 17.6 | 20.0 | C3038 |
| 178.0 | 60.0 | 17.6 | 20.0 | C3205 |
| 195.0 | 56.0 | 13.6 | 20.0 | C3007 |
| 195.0 | 60.0 | 13.6 | 20.0 | C3037 |
| 220.0 | 40.0 | 13.6 | 12.0 | C3204 |

Please contact us for additional product specification. Data included is the information required to ensure compatibility with OEM e.g. Thermo® analyser or OEM part.

Scrubber Tubes



Classic Shape



| Height (mm) | End Diameter Top (mm) OD | Centre Diameter (mm) OD | End Diameter Base (mm) OD | Part Number |
|-------------|-----------------------------|----------------------------|------------------------------|-----------------------|
| 101.5 | | 26.0 | | C4032 |
| 134.0 | | 20.0 | | C4343 |
| 140.0 | 11.0 | 24.0 | 11.0 | C1062 |
| 150.0 | 13.6 | 16.0 | 13.6 | C1134 |
| 152.0 | | 26.0 | | C4004 |
| 152.0 | | 30.0 | | C4315 |
| 178.0 | | 35.0 | | C4203 |
| 203.0 | 11.0 | 17.0 | 11.0 | C6026 |
| 210.0 | 11.0 | 24.0 | 11.0 | C1061 |
| 216.0 | 11.0 | 25.0 | 11.0 | C2021 |
| 220.0 | 20.0 | 30.0 | 20.0 | C8105 |
| 250.0 | 10.0 | 15.5 | 10.0 | C1032 |
| 250.0 | 13.6 | 20.0 | 13.6 | C1014 |
| 265.0 | 10.0 | 15.5 | 10.0 | C1009 |
| 280.0 | 6.0 | 12.0 | 6.0 | C1104 |
| 310.0 | 20.0 | 24.0 | 20.0 | C8103 |

Please contact us for additional product specification. Data included is the information required to ensure compatibility with OEM e.g. Perkin Elmer® analyser or OEM part.

Prepacked Scrubber Tubes

Our product range includes prepacked scrubber tubes. Produced as OEM equivalents and expertly packaged to ensure preservation of reagent. Elemental Microanalysis Ltd's website will help you find the product you are looking for.



Scrubber Tubes



The centre of excellence in elemental analysis

Specialist and Custom-made Glassware

Elemental Microanalysis manufactures many “non-standard” scrubber tube shapes too. Our website details the equivalents we supply.

Elemental Microanalysis also supplies custom products ranging from 6mm to 100mm in diameter, with a variety of end styles, caps, and seals, all manufactured in an ISO 9001 environment by our team of experts. Production runs from one-off prototypes to 1000 or more can be easily accommodated.



Reagents, O-rings and Seals, Caps

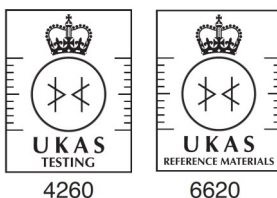
Produced in our ISO 9001 facility, Elemental Microanalysis can provide everything you need to pack your scrubber tube.

Magnesium perchlorate, Sicapent®, soda lime, sodium hydroxide / EMASorb are just some of the typical scrubbing reagents available in pack sizes from 25g to 800g.

We also supply a huge range of scrubber tube caps and fittings, O-rings, seals and quartz, glass or cotton wool.



Elemental Microanalysis Ltd
1 Hameldown Road Okehampton
Devon EX20 1UB UK
t. +44 (0) 1837 54446
f. +44 (0) 1837 54544
info@microanalysis.co.uk
www.elementalmicroanalysis.com



Available from your local Dealer:

